

# SECOND GRADE MUSIC

Students in second grade are working on solfege melodies and beginning rhythms. Complete the “Sol and Mi on Melody Street” review and “Copycat Friends” as a review before composing your song on page 3.

# SOL

# and

# mi on Melody Street

Name \_\_\_\_\_

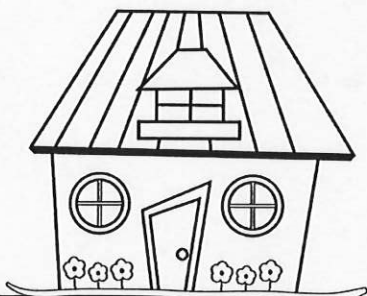
Our friends, sol and mi, have moved onto Melody Street!

Which is mi's house? Which is sol's house?

Write who lives in each house on the line below the house.



\_\_\_\_\_



\_\_\_\_\_

Trace sol and mi. Write "s" inside sol and "m" inside mi to label them.

\_\_\_\_\_

\_\_\_\_\_

\_\_\_\_\_

\_\_\_\_\_

\_\_\_\_\_

If sol is in a space,  
mi is in the space below.

\_\_\_\_\_

\_\_\_\_\_

\_\_\_\_\_

\_\_\_\_\_

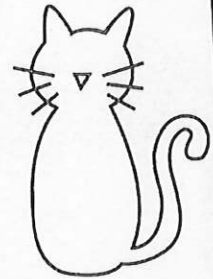
\_\_\_\_\_

If sol is on a line,  
mi is on the line below.

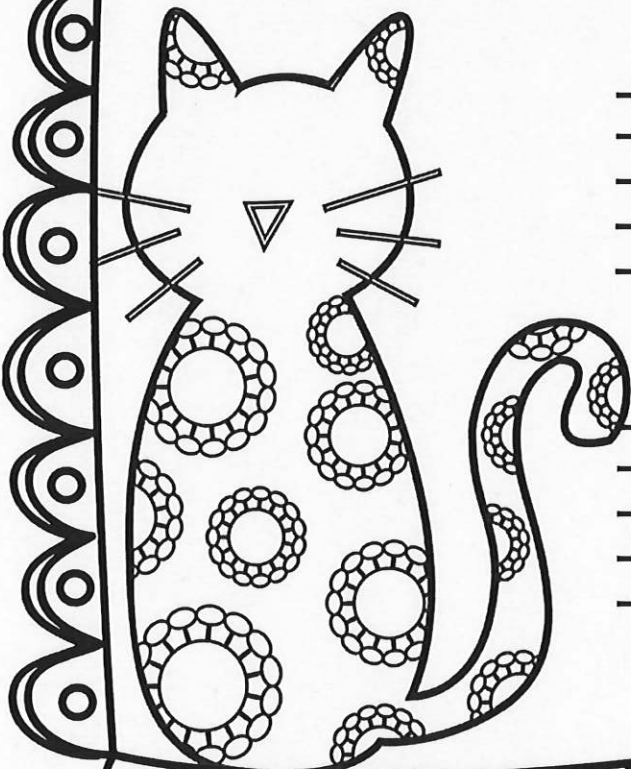
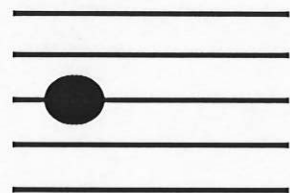
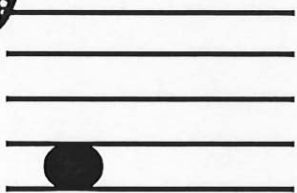
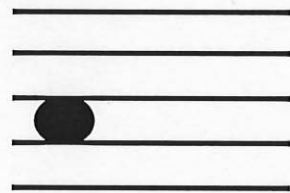
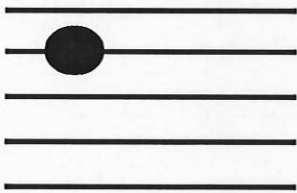
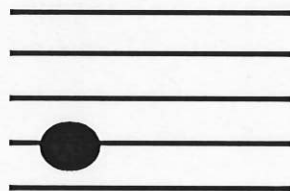
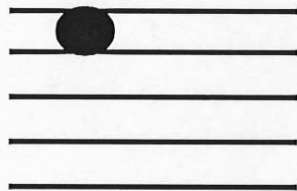
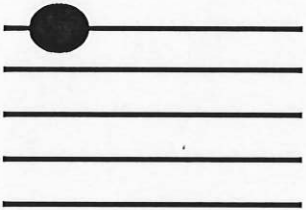
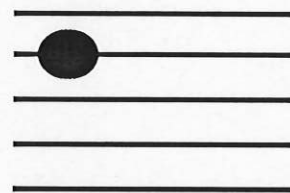
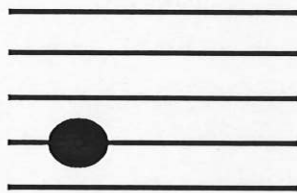
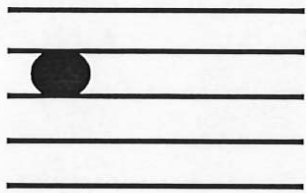
Name \_\_\_\_\_

# COPYcat FRIENDS

Will mi live **ON** a **Line**  
or **IN** a **Space**?



Show where mi would live if sol lives where the note is filled in.



Name \_\_\_\_\_

COMPOSE

your own

sol-mi song

Use the rhythms to create your own sol mi song! Plan your composition by writing s or m below each rhythm on the line, then show where they go on the staff. Don't forget your stems and beams!



Handwriting practice lines consisting of four sets of three horizontal lines. The first set has a dashed circle on the top line. The second set has a dashed circle on the top line.



Handwriting practice lines consisting of four sets of three horizontal lines. The first set has a dashed circle on the top line. The second set has a dashed circle on the top line. The third set has a dashed circle on the top line.

